



IMMAGINE RAPPRESENTATIVA EC REPRESENTATIVE IMAGE

EC6902329

DISTR. BOARD DBO 4 SOCKETS IP44

Industrial > Distribution boards > Distribution boards > Series dbo - board system > Cee socket outlet combination (iec 60309) > 4x16 a sockets



Technical Symbols/Marks/Approvals



Norms

EN 61439-1 EN 61439-3

Etim

GROUP EG000014 - Industrial sockets/plug applications

CLASS EC000379 - CEE socket outlet combination (IEC 60309)

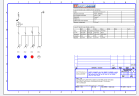
Power loss	13 W	Leakage current type	Other	Degree of protection (IP)	IP44
Colour	Grey	Width	200 mm	Height	430 mm
Depth	95 mm	Housing material	Plastic	Contact material	CuZn
Surface coating contacts	Untreated	Military model	No	Number of socket outlets with protective contact CEE 7/3 (type F)	1
Number of socket outlets Swiss standard type 13	0	Number of socket outlets Swiss standard type 15	0	Number of socket outlets Swiss standard type 23	0
Number of socket outlets Swiss standard type 25	0	Type of mains connection	Other	Protection	Overcurrent switch
Number of socket outlets Danish standard (earthing pin, type K)	0	CEE socket outlet 16 A	3x16A xp xxxV	CEE socket outlet 32 A	None
CEE socket outlet 63 A	None	CEE socket outlet 125 A	None	Other fixtures and/or empty locations	0
Earth leakage switch	None	Number of miniature circuit breakers (MCB)	1	Power supply/connection possibility	1 cable (branch line)
Number of poles mains connection	4	Diameter cable entry	M25	Handling	Wall mounting

Technical Characteristics

MV protection device	1x4P 16A	Maximum power that can be delivered	10.5 kW	Prese_16A_2P+T	2
Prese_16A_3P+N+T	-	Prese_16A_3P+T	1	Schuko/bivalent sockets	1

Documentation available for download

Electical diagram



6902329.pdf

Barcode



8056351662864

Unit

1 NR

0.505x0.275x0.155 [m]

2.8 [kg]