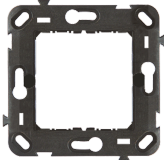


ECL4601



CONNECTABLE INTERNATIONAL FRAME 2 MODULES - SQUARE BOX - 71mm WHEELBASE



Residential > Wiring devices > Mylife > Mylife international plates > Holder for modular domestic switching devices

Technical Symbols/Marks/Approvals



Norms

EN 60669-1

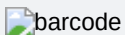
Etim

GROUP EG000013 - Domestic switching devices

CLASS EC002948 - Holder for modular domestic switching devices

| | | | | | |
|---|---------------------|---------------------------------------|-------------------------|--|---------------|
| Mounting method | Mounting with screw | Mounting direction | Horizontal and vertical | Number of modules horizontal (module system) | 1 |
| Number of modules vertical (module system) | 1 | Flush-mounted installation | Yes | Suitable for subfloor installation duct box | No |
| Suitable for wall duct | No | Material | Plastic | Material quality | Thermoplastic |
| Surface protection | Untreated | Model | Flush-mounted | With screws | Yes |
| Mounting method of the module inserts | Front side | With built-in installation box | No | Suitable for mounting in round junction box 60 mm | No |

Barcode



8033576777238

Unit

1 NR

0.0172 [kg]



8054320288015

Pack

40 NR

0.15x0.3x0.095 [m]

0.688 [kg]



8057711597017

Cardboard

480 NR

0.305x0.46x0.395 [m]

8.256 [kg]