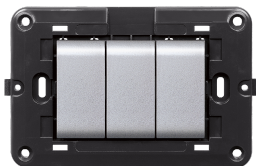


ECL4002DTEC



Residential > Wiring devices > Series domo mylife > Series domo mylife > Installation switch > Wall-mounted home automation

Technical Symbols/Marks/Approvals



Etim

GROUP EG000013 - Domestic switching devices

CLASS EC001590 - Installation switch

Rated current	16 A	Mounting method	Surface mounted	Material	Plastic
Material quality	Thermoplastic	Halogen free	No	Anti-bacterial treatment	No
Surface protection	Untreated	Surface finishing	Glossy	Colour	Grey
Type of fastening	Engage (snap)	Suitable for degree of protection (IP)	IP20	Assembly arrangement	Modular device for domestic switching devices
Number of modules (module system)	1	Operating method	Rocker/button	Compatible with Apple HomeKit	No
Compatible with Google Assistant	No	Compatible with Amazon Alexa	No	IFTTT support available	No
Number of rockers	1	Nominal voltage	3 V	Monitoring contact	No
With mounting plate	No	Wiring system	Other	Push button switch	Yes
Label space/information surface	Yes	Lighting	No	Heating switch	No
Washing machine switch	No				

Barcode



8056351664974

Unit

1 NR