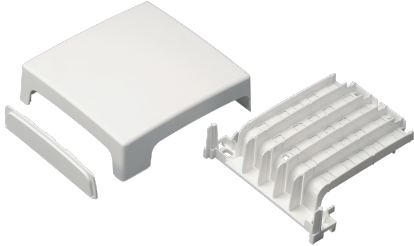


**EC20009**



**3 WAY JUNCTION BOX 70X20 WHITE  
RAL 9001**



Trunkings > Wall and ceiling > Skirting and wall trunkings > Series 20 - trunking fittings > Junction unit for skirting trunkings

**Technical Symbols/Marks/Approvals**

IP40	IK08	GWT 650°	CE	RoHS II		MADE IN ITALY
------	------	-------------	----	---------	--	---------------------

**Norms**

EN 50085-1 EN 50085-2-1

**Description**

The 3-way junction box is an essential accessory for creating T-shaped branches from straight trunking. The internal knockout, shaped to accommodate multiple dimensions, facilitates assembly, ensuring both a perfect appearance and the maintenance of the IP rating. It is also used for branches perpendicular to the baseboard itself or to connect the trunking to the floor. The internal grille, snap-on to the trunking and screwed to the wall, prevents any contact or overlapping of cables in the branches. To reduce from 130x28 to 70x20, use: EC20209 or EC20309.

**Etim**

**GROUP EG000006 - Installation ducts for wall and ceiling**

**CLASS EC001940 - Transition piece for skirting duct**

<b>Degree of protection (IP)</b>	IP40	<b>Material</b>	Plastic	<b>Material quality</b>	Acrylonitrile butadiene styrene (ABS)
<b>Halogen free</b>	Yes	<b>Impact strength</b>	IK08	<b>RAL-number</b>	9001
<b>Decoration</b>	None	<b>Height baseboard duct</b>	70 mm	<b>Depth plinth skirting duct</b>	20 mm
<b>With carpet border</b>	No	<b>Colour top cover</b>	White	<b>Height duct connection</b>	70 mm
<b>Width duct connection</b>	20 mm	<b>Duct connection</b>	Mini/maxi trunking	<b>Branch off duct connection</b>	Centric

**Documentation available for download**

**Certification**  
Battiscopa Serie 20.pdf

**General data sheets**  
SCI\_20 BATT.pdf

## Barcode



8033576770192

**Unit**

1 NR

0.08 [kg]



8059307212519

**Cardboard**

5 NR

0.165x0.175x0.105 [m]

0.4 [kg]