

EC692521



WALL-MOUNT INCLINED BOX SOCKET IP44 220V 2P+E 32A

Industrial > Plugs and sockets > Panel and wall-mount > Panel sockets > Cee socket outlet (iec 60309) > Ip44 - 32 a - base angle 20°

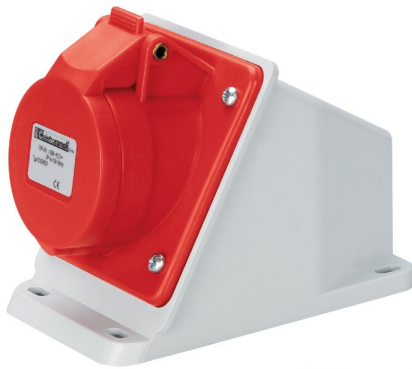


IMMAGINE RAPPRESENTATIVA REPRESENTATIVE IMAGE

Technical Symbols/Marks/Approvals



Norms

EN 60309-1 EN 60309-2

Description

Industrial wall socket type EN 60309. IP44 protection rating. 20° tilt. Dimensions: 90x128x92.5 mm. Inclined enclosure, designed for 20-25 mm conduit entry. Pre-screwed screw terminals oriented in the same direction for quick wiring. Stainless steel cover springs. Gasket included.

2P+E 32A 200-250V~ 6h

Etim

GROUP EG000014 - Industrial sockets/plug applications

CLASS EC001321 - CEE socket outlet (IEC 60309)

Number of poles	3	Degree of protection (IP)	IP44	Material	Plastic
Type of fastening	External mounting	RAL-number	7035	Housing colour	Grey
Lockable	No	Insulated mounting	Yes	IEC-ampereage	32 A
Voltage according to EN 60309-2	230 V (50+60 Hz) blue	Clock hour position	6 h	Identification colour	Blue
Connection system	Screwed terminal	Cable entry	Preembossing	Contact material	CuZn
Surface coating contacts	Untreated	Military model	No	Text field	No

Barcode



8033576770987

Unit

1 NR

0.25 [kg]



8059307217804

Cardboard

12 NR

0.39x0.295x0.15 [m]

3 [kg]