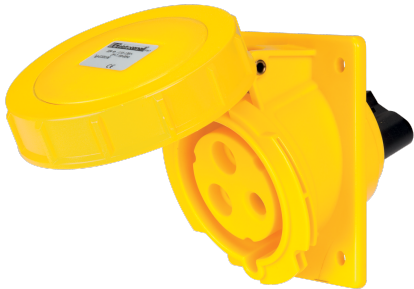


EC69106



**PANEL-MOUNT INCLINED SOCKET
IP67 110/130V 2P+E 32A**



Industrial > Plugs and sockets > Panel and wall-mount > Panel sockets > Panel-mounted cee socket outlet (iec 60309) > Ip67 - 32 a

Technical Symbols/Marks/Approvals



Norms

EN 60309-1 EN 60309-2

Description

EN 60309 industrial flush-mount socket. IP67 protection rating. 20° tilt. Pre-screwed screw terminals oriented in the same direction for quick wiring. Stainless steel cover springs. Panel gasket included. Recommended mounting with 3.5x16 or M4x20 self-tapping screws (not included).
2P+E 32A 100-130V~ 4h

Etim

GROUP EG000014 - Industrial sockets/plug applications
CLASS EC001317 - Panel-mounted CEE socket outlet (IEC 60309)

Number of poles	3	Degree of protection (IP)	IP67	Material	Plastic
RAL-number	1023	IEC-amperage	32 A	Voltage according to EN 60309-2	110 V (50+60 Hz) yellow
Clock hour position	4 h	Identification colour	Yellow	Connection system	Screwed terminal
Insert direction	Straight	Surface coating contacts	Untreated	Military model	No
Rated voltage	100-130 V	Rated frequency	50-60 Hz	Flange size vertical	97 mm
Drill hole distance vertical	73 mm	Flange size horizontal	80 mm	Drill hole distance horizontal	60 mm

Documentation available for download



Certification

IMQ_CA02.05864_
2025_32A.pdf

Barcode



8033576770857

Unit

1 NR

0.2702 [kg]



8059307217408

Pack

10 NR

0.19x0.29x0.225 [m]

2.702 [kg]



8033576771458

Cardboard

80 NR

21.616 [kg]