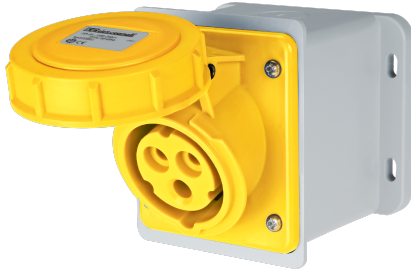


EC691041D

**WALL-MOUNT STRAIGHT BOX
SOCKET IP67 110V 2P+E 16A**



Industrial > Plugs and sockets > Panel and wall-mount > Panel sockets > Cee socket outlet (iec 60309) > Ip67 - 16 a - straight base - socket sloped 20°

Technical Symbols/Marks/Approvals



Norms

EN 60309-1 EN 60309-2

Description

Industrial wall socket, type EN 60309. IP67 protection rating. 20° tilt. Dimensions: 96x96x70 mm. Straight housing, designed for 20-25 mm conduit entry. Pre-screwed screw terminals oriented in the same direction for quick wiring. Stainless steel cover springs. Gasket included.
2P+E 16A 110-130V~ 4h

Etim

GROUP EG000014 - Industrial sockets/plug applications

CLASS EC001321 - CEE socket outlet (IEC 60309)

Number of poles	3	Degree of protection (IP)	IP67	Material	Plastic
Type of fastening	External mounting	RAL-number	7035	Housing colour	Grey
Lockable	No	Insulated mounting	Yes	IEC-ampereage	16 A
Voltage according to EN 60309-2	110 V (50+60 Hz) yellow	Clock hour position	4 h	Identification colour	Yellow
Connection system	Screwed terminal	Cable entry	Preembossing	Contact material	CuZn
Surface coating contacts	Untreated	Military model	No	Text field	No

Barcode



8033954871473

Unit

1 NR

0.25 [kg]



8059307217361

Cardboard

12 NR

0.39x0.295x0.15 [m]

3 [kg]