

## EC691021

### WALL-MOUNT INCLINED BOX SOCKET IP44 110V 2P+E 32A

Industrial > Plugs and sockets > Panel and wall-mount > Panel sockets > Cee socket outlet (iec 60309) > Ip44 - 32 a - base angle 20°

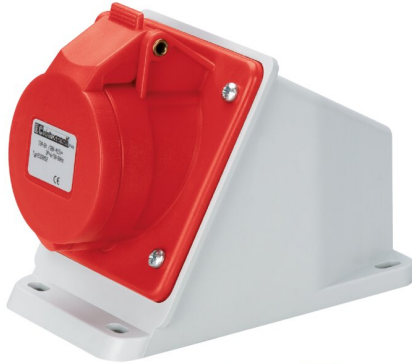


IMMAGINE RAPPRESENTATIVA EC REPRESENTATIVE IMAGE

#### Technical Symbols/Marks/Approvals



#### Norms

EN 60309-1 EN 60309-2

## Description

Industrial wall socket type EN 60309. IP44 protection rating. 20° tilt. Dimensions: 90x128x92.5 mm. Inclined enclosure, designed for 20-25 mm conduit entry. Pre-screwed screw terminals oriented in the same direction for quick wiring. Stainless steel cover springs. Gasket included.

2P+E 32A 110-130V~ 4h

## Etim

**GROUP EG000014 - Industrial sockets/plug applications**

**CLASS EC001321 - CEE socket outlet (IEC 60309)**

<b>Number of poles</b>	3	<b>Degree of protection (IP)</b>	IP44	<b>Material</b>	Plastic
<b>Type of fastening</b>	External mounting	<b>Model</b>	Surface mounted	<b>RAL-number</b>	7035
<b>Housing colour</b>	Grey	<b>Lockable</b>	No	<b>Insulated mounting</b>	Yes
<b>IEC-amperage</b>	32 A	<b>Voltage according to EN 60309-2</b>	110 V (50+60 Hz) yellow	<b>Clock hour position</b>	4 h
<b>Identification colour</b>	Yellow	<b>Connection system</b>	Screwed terminal	<b>Cable entry</b>	Preembossing
<b>Contact material</b>	CuZn	<b>Surface coating contacts</b>	Untreated	<b>Military model</b>	No
<b>Text field</b>	No				

## Barcode



8033576770963

**Unit**

1 NR

0.25 [kg]



8059307217309

**Cardboard**

12 NR

0.39x0.295x0.15 [m]

3 [kg]