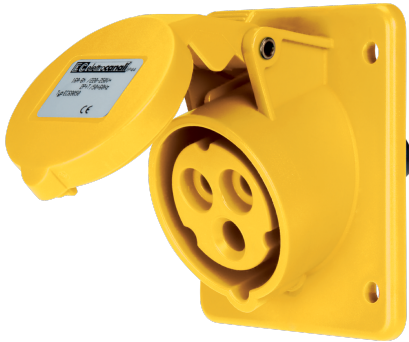


EC69100

**PANEL-MOUNT INCLINED SOCKET IP44 110/130V
2P+E 16A**



Industrial > Plugs and sockets > Panel and wall-mount > Panel sockets > Panel-mounted cee socket outlet (iec 60309) > Ip44 - 16 a

Technical Symbols/Marks/Approvals



Norms

EN 60309-1 EN 60309-2

Description

Industrial flush-mount socket, type EN 60309. IP44 protection rating. 20° tilt. Pre-screwed and oriented screw terminals for quick wiring. Stainless steel cover springs. Panel gasket included. Recommended mounting with 3.5x16 or M4x20 self-tapping screws (not included). 2P+E 16A 100-130V~ 4h

Etim

GROUP EG000014 - Industrial sockets/plug applications

CLASS EC001317 - Panel-mounted CEE socket outlet (IEC 60309)

Number of poles	3	Degree of protection (IP)	IP44	Material	Plastic
RAL-number	1023	IEC-ampereage	16 A	Voltage according to EN 60309-2	110 V (50+60 Hz) yellow
Clock hour position	4 h	Identification colour	Yellow	Connection system	Screwed terminal
Insert direction	Straight	Surface coating contacts	Untreated	Military model	No
Rated voltage	100-130 V	Rated frequency	50-60 Hz	Flange size vertical	85 mm
Drill hole distance vertical	60 mm	Flange size horizontal	75 mm	Drill hole distance horizontal	60 mm

Documentation available for download



Barcode



8033576770734

Unit

1 NR

0.138 [kg]



8057711591169

Pack

10 NR

1.38 [kg]



8033576771854

Cardboard

80 NR

11.04 [kg]