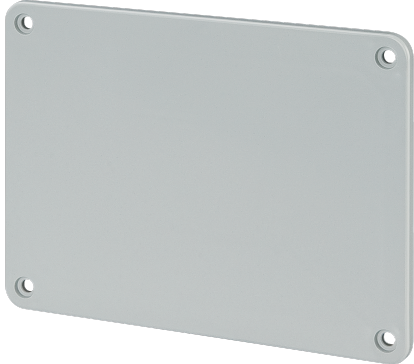


**EC690F2**

**BLANK FLANGE FOR HORIZ. INTERLOCKED SOCKET 153X104 mm**

Industrial > Distribution boards > Distribution boards > Accessories for distribution boards > Accessories/spare parts for small distribution board > Flanges



**Technical Symbols/Marks/Approvals**

IP65	GWT 650°	CE	RoHS II		MADE IN ITALY
------	----------	----	---------	--	---------------

**Norms**

EN 60670-1

**Description**

Blank plate for 690 series distribution boards. Made of impact-resistant ABS-based technopolymer. Resistance to abnormal heat up to 650°C (GWT).  
Dimensions: 104x153 mm.  
Suitable for 69034-35 distribution boards.

**Etim**

**GROUP EG000023 - Distribution boards**  
**CLASS EC002287 - Accessories/spare parts for small distribution board**

Type of accessory/spare part	Other	<b>Accessory</b>	Yes	<b>Spare part</b>	No
------------------------------	-------	------------------	-----	-------------------	----

**Barcode**

8033954873729  
**Unit**  
1 NR  
0.026 [kg]

8050880883288  
**Cardboard**  
10 NR  
0.26 [kg]