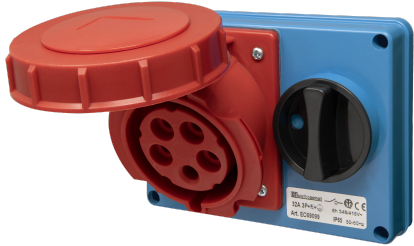


EC69099

**PANEL-MOUNT HORIZ. INTERLOCKED SOCKET IP65
380V 3P+N+E 32A**



Industrial > Plugs and sockets > Switched interlocked > Horizontal - without fuse holder > Cee socket outlet, disconnectable (iec 60309) > Ip65 - wall-mount

Technical Symbols/Marks/Approvals



Norms

EN 60309-1 EN 60309-2 EN 60309-4

Description

Interlocked switched flush-mounting socket. Protection rating IP65. Dimensions: 155x115x24 mm. Fixing centres 138x98 mm. 20° inclined socket. Switch type AC23A - 10 kA. Ergonomic handle padlockable in ON/OFF position. Stainless steel cover springs. 3P+N+E 32A 346-415V~ 6h

Etim

GROUP EG000014 - Industrial sockets/plug applications

CLASS EC001324 - CEE socket outlet, disconnectable, with fuse (IEC 60309)

Number of poles	5	Degree of protection (IP)	IP65	Model	Top cover
Housing material	Plastic	IEC-ampereage	32 A	Voltage according to EN 60309-2	400 V (50+60 Hz) red
Clock hour position	6 h	Identification colour	Red	Contact material	CuZn
Surface coating contacts	Untreated	Military model	No	Protection	None
Switch	Mechanical locking	With earth leakage switch	No	Empty locations on mounting rail	No

Documentation available for download



Barcode



8032636764423

Unit

1 NR

0.17x0.12x0.12 [m]

0.72 [kg]



8059307217163

Cardboard

24 NR

0.6x0.415x0.44 [m]

17.28 [kg]