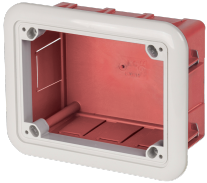


EC690910



**FLUSH MOUNTING BOX
INTERLOCKED HORIZ. SOCKETS**

Industrial > Plugs and sockets > Switched interlocked > Accessories for interlocked sockets > Accessories/spare parts for cee plugs and sockets (iec 60309) > Boxes for horizontal interlocked sockets

Technical Symbols/Marks/Approvals

IP44	GWT 650°	CE	RoHS II		MADE IN ITALY
------	-------------	----	---------	--	---------------

Description

Flush-mounting base for horizontal interlocked sockets without fuse base. With external finishing frame and wall gasket. Dimensions: 185x145x80 mm. Manufactured in shock-resistant technopolymer. Resistance to abnormal heat: 650°C (GWT).

Etim

GROUP EG000014 - Industrial sockets/plug applications
CLASS EC002838 - Accessories/spare parts for CEE plugs and sockets (IEC 60309)

Suitable for Spare part	Other No	Type of accessory/spare part	Other	Accessory	Yes
-------------------------	----------	------------------------------	-------	-----------	-----

Barcode

8032636764577
Unit
1 NR
0.145x0.185x0.08 [m]
0.25 [kg]

8059307216500
Cardboard
12 NR
0.295x0.395x0.3 [m]
3 [kg]