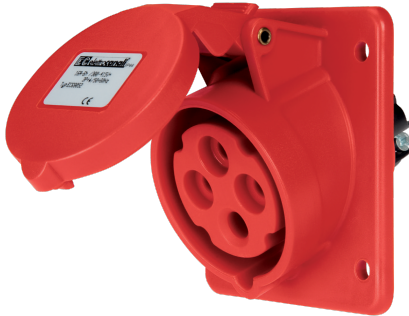


EC69060

**PANEL-MOUNT INCLINED SOCKET IP44 380/415V
3P+E 32A**



Industrial > Plugs and sockets > Panel and wall-mount > Panel sockets > Panel-mounted cee socket outlet (iec 60309) > Ip44 - 32 a

Technical Symbols/Marks/Approvals



Norms

EN 60309-1 EN 60309-2

Description

Industrial flush-mount socket, type EN 60309. IP44 protection rating. 20° tilt. Pre-screwed screw terminals oriented in the same direction for quick wiring. Stainless steel cover springs. Panel gasket included. Recommended mounting with 3.5x16 or M4x20 self-tapping screws (not included).
3P+E 32A 380-415V~ 6h

Etim

GROUP EG000014 - Industrial sockets/plug applications
CLASS EC001317 - Panel-mounted CEE socket outlet (IEC 60309)

Number of poles	4	Degree of protection (IP)	IP44	Material	Plastic
RAL-number	3000	IEC-ampere	32 A	Voltage according to EN 60309-2	400 V (50+60 Hz) red
Clock hour position	6 h	Identification colour	Red	Connection system	Screwed terminal
Insert direction	Straight	Surface coating contacts	Untreated	Military model	No
Rated voltage	380-415 V	Rated frequency	50-60 Hz	Flange size vertical	97 mm
Drill hole distance vertical	73 mm	Flange size horizontal	80 mm	Drill hole distance horizontal	60 mm

Documentation available for download



Certification

IMQ_CA02.05864_
2025_32A.pdf

Barcode



8032636763884

Unit

1 NR

0.2167 [kg]



8057711591145

Pack

10 NR

0.19x0.285x0.165 [m]

2.167 [kg]



8033576778600

Cardboard

60 NR

0.405x0.605x0.355 [m]

13.002 [kg]