

EC690555



ADAPTOR 16A 2P+E INDUSTRIAL IP67 TO SCHUKO 2P



Industrial > Plugs and sockets > Multiple way connectors and adaptors > Plug-socket adaptors > Cee socket outlet combination (iec 60309) > Series klect - schuko sockets to cee

Technical Symbols/Marks/Approvals



Norms

EN 60309-1 EN 60309-2

Description

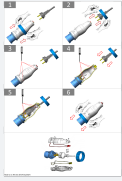
Industrial to residential system adapter. IP67 protection rating. To maintain the original Schuko plug. For mobile and temporary use only. Not suitable for use in areas with explosion or fire hazards. Always disconnect from power when not in use.
EN 60309 2P+E 200-250V~ 16A 6h IP67 plug
2P+E 200-250V~ 16A Schuko socket

Etim

GROUP EG000014 - Industrial sockets/plug applications
CLASS EC000379 - CEE socket outlet combination (IEC 60309)

Degree of protection (IP)	IP67	Colour	Grey	Housing material	Plastic
Contact material	CuZn	Surface coating contacts	Untreated	Military model	No
Number of socket outlets with protective contact CEE 7/3 (type F)	0	Number of socket outlets Swiss standard type 13	0	Number of socket outlets Swiss standard type 15	0
Number of socket outlets Swiss standard type 23	0	Number of socket outlets Swiss standard type 25	0	Type of mains connection	CEE 16 A
Cable length	0 m	Protection	None	Number of socket outlets Danish standard (earthing pin, type K)	0
CEE socket outlet 16 A	None	CEE socket outlet 32 A	None	CEE socket outlet 63 A	None
CEE socket outlet 125 A	None	Other fixtures and/or empty locations	0	Earth leakage switch	None
Number of miniature circuit breakers (MCB)	0	Power supply/connection possibility	Other	Number of poles mains connection	3
Handling	Portable				

Documentation available for download



Instruction booklet

Istruzioni
EC690550-555.pdf

Barcode



8050507873487

Unit

1 NR

0.07x0.07x0.17 [m]

0.205 [kg]



8050507876235

Cardboard

12 NR

0.26x0.32x0.16 [m]

2.46 [kg]