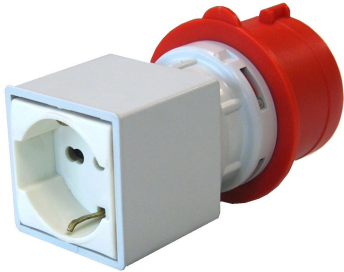


**EC690530**



**ADAPTOR 3P+N+E INDUSTRIAL TO SCHUKO SOCKETS**



Industrial > Plugs and sockets > Multiple way connectors and adaptors > Plug-socket adaptors > Cee socket outlet combination (iec 60309) > Adaptors - 16 a cee plug to domestic socket

**Technical Symbols/Marks/Approvals**



**Norms**

EN 60309-1 EN 60309-2

**Description**

Industrial to residential system adapter. IP20 protection rating. For mobile and temporary use only. Not suitable for use in areas with explosion or fire hazards. Always disconnect from power when not in use.  
EN 60309 3P+N+E plug 346-415V~ 16A 6h IP44  
2P+E socket 200-250V~ 16A Dual-pole/Schuko

**Etim**

**GROUP EG000014 - Industrial sockets/plug applications**  
**CLASS EC000379 - CEE socket outlet combination (IEC 60309)**

<b>Degree of protection (IP)</b>	IP20	<b>Colour</b>	Grey	<b>Housing material</b>	Plastic
<b>Contact material</b>	CuZn	<b>Surface coating contacts</b>	Untreated	<b>Military model</b>	No
<b>Number of socket outlets with protective contact CEE 7/3 (type F)</b>	0	<b>Number of socket outlets Swiss standard type 13</b>	0	<b>Number of socket outlets Swiss standard type 15</b>	0
<b>Number of socket outlets Swiss standard type 23</b>	0	<b>Number of socket outlets Swiss standard type 25</b>	0	<b>Type of mains connection</b>	CEE 16 A
<b>Cable length</b>	0 m	<b>Protection</b>	None	<b>Number of socket outlets Danish standard (earthing pin, type K)</b>	0
<b>CEE socket outlet 16 A</b>	None	<b>CEE socket outlet 32 A</b>	None	<b>CEE socket outlet 63 A</b>	None
<b>CEE socket outlet 125 A</b>	None	<b>Other fixtures and/or empty locations</b>	1	<b>Earth leakage switch</b>	None
<b>Number of miniature circuit breakers (MCB)</b>	0	<b>Power supply/connection possibility</b>	Other	<b>Number of poles mains connection</b>	5
<b>Handling</b>	Portable				

## Technical Characteristics

Installed sockets 10/16A  
2P+E

1 Schuko  
bivalente

**16A plug**

3P+N+T

## Barcode



8033576770697

**Unit**

1 NR

0.2111 [kg]



8050880883035

**Cardboard**

10 NR

0.19x0.29x0.135 [m]

2.111 [kg]