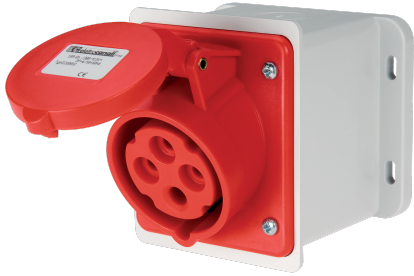


**EC690521D**



**WALL-MOUNT STRAIGHT BOX  
SOCKET IP44 380V 3P+E 16A**



Industrial > Plugs and sockets > Panel and wall-mount > Panel sockets > Cee socket outlet (iec 60309) > Ip44 - 16 a - straight base - socket sloped 20°

**Technical Symbols/Marks/Approvals**



**Norms**

EN 60309-1 EN 60309-2

**Description**

Industrial wall socket type EN 60309. IP44 protection rating. 20° tilt. Dimensions: 96x96x70 mm. Straight enclosure, designed for 20-25 mm conduit entry. Pre-screwed screw terminals oriented in the same direction for quick wiring. Stainless steel cover springs. Gasket included.  
3P+E 16A 380-415V~ 6h

**Etim**

**GROUP EG000014 - Industrial sockets/plug applications**

**CLASS EC001321 - CEE socket outlet (IEC 60309)**

<b>Number of poles</b>	4	<b>Degree of protection (IP)</b>	IP44	<b>Material</b>	Plastic
<b>Type of fastening</b>	External mounting	<b>Model</b>	Surface mounted	<b>RAL-number</b>	7035
<b>Housing colour</b>	Grey	<b>Lockable</b>	No	<b>Insulated mounting</b>	Yes
<b>IEC-amperage</b>	16 A	<b>Voltage according to EN 60309-2</b>	400 V (50+60 Hz) red	<b>Clock hour position</b>	6 h
<b>Identification colour</b>	Red	<b>Connection system</b>	Screwed terminal	<b>Cable entry</b>	Preembossing
<b>Contact material</b>	CuZn	<b>Surface coating contacts</b>	Untreated	<b>Military model</b>	No
<b>Text field</b>	No				

## Barcode



8033954871398

**Unit**

1 NR

0.2083 [kg]



8059307215725

**Cardboard**

12 NR

0.39x0.295x0.15 [m]

2.4996 [kg]