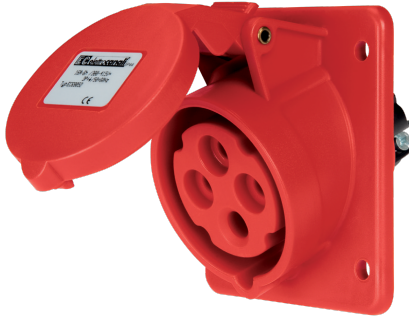


EC69052



**PANEL-MOUNT INCLINED SOCKET
IP44 380/415V 3P+E 16A**



Industrial > Plugs and sockets > Panel and wall-mount > Panel sockets > Panel-mounted cee socket outlet (iec 60309) > Ip44 - 16 a

Technical Symbols/Marks/Approvals



Norms

EN 60309-1 EN 60309-2

Description

EN 60309 industrial flush-mount socket. IP44 protection rating. 20° tilt. Pre-screwed screw terminals oriented in the same direction for quick wiring. Stainless steel cover springs. Panel gasket included. Recommended mounting with 3.5x16 or M4x20 self-tapping screws (not included).
3P+E 16A 380-415V~ 6h

Etim

GROUP EG000014 - Industrial sockets/plug applications
CLASS EC001317 - Panel-mounted CEE socket outlet (IEC 60309)

Number of poles	4	Degree of protection (IP)	IP44	Material	Plastic
RAL-number	3000	IEC-amperage	16 A	Voltage according to EN 60309-2	400 V (50+60 Hz) red
Clock hour position	6 h	Identification colour	Red	Connection system	Screwed terminal
Insert direction	Straight	Surface coating contacts	Untreated	Military model	No
Rated voltage	380-415 V	Rated frequency	50-60 Hz	Flange size vertical	85 mm
Drill hole distance vertical	60 mm	Flange size horizontal	75 mm	Drill hole distance horizontal	60 mm

Documentation available for download

Certification

IMQ_CA02.05863_2025_16A.pdf

Barcode



8032793874485

Unit

1 NR

0.1538 [kg]



8057711591077

Pack

10 NR

0.185x0.285x0.135 [m]

1.538 [kg]



8033576778556

Cardboard

80 NR

0.405x0.605x0.355 [m]

12.304 [kg]