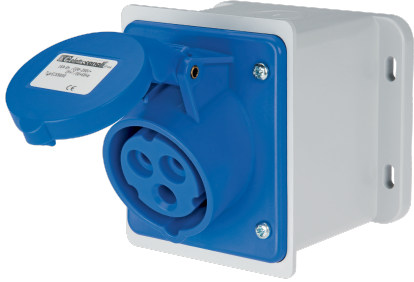


EC690501D



**WALL-MOUNT STRAIGHT BOX
SOCKET IP44 220V 2P+E 16A**



Industrial > Plugs and sockets > Panel and wall-mount > Panel sockets > Cee socket outlet (iec 60309) > Ip44 - 16 a - straight base - socket sloped 20°

Technical Symbols/Marks/Approvals



Norms

EN 60309-1 EN 60309-2

Description

Industrial wall socket, type EN 60309. IP44 protection rating. 20° tilt. Dimensions: 96x96x70 mm. Straight enclosure, designed for 20-25 mm conduit entry. Pre-screwed screw terminals oriented in the same direction for quick wiring. Stainless steel cover springs. Gasket included.
2P+E 16A 200-250V~ 6h

Etim

GROUP EG000014 - Industrial sockets/plug applications

CLASS EC001321 - CEE socket outlet (IEC 60309)

Number of poles	3	Degree of protection (IP)	IP44	Material	Plastic
Type of fastening	External mounting	Model	Surface mounted	RAL-number	7035
Housing colour	Grey	Lockable	No	Insulated mounting	Yes
IEC-amperage	16 A	Voltage according to EN 60309-2	230 V (50+60 Hz) blue	Clock hour position	6 h
Identification colour	Blue	Connection system	Screwed terminal	Cable entry	Preembossing
Contact material	CuZn	Surface coating contacts	Untreated	Military model	No
Text field	No				

Barcode



8033954871374

Unit

1 NR

0.2083 [kg]



8059307215671

Cardboard

12 NR

0.39x0.295x0.15 [m]

2.4996 [kg]