

EC64008



**WALL SURFACE WATERTIGHT
EMERGENCY 8 MOD. ENCLOSURE
200X180X100 RED**



Enclosures > Special application systems > Emergency line > Modular enclosures > Small distribution board > Emergency modular enclosures

Technical Symbols/Marks/Approvals



Norms

EN 60670-1 EN 60670-24

Etim

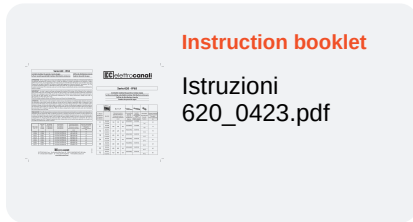
GROUP EG000023 - Distribution boards
CLASS EC000214 - Small distribution board

Mounting method	Surface mounted	Degree of protection (IP)	IP65	Width in number of modular spacings	8
Colour	Red	Width	200 mm	Height	180 mm
Depth	100 mm	RAL-number	3000	UV resistant	Yes
Type of covering	Door	Type of door	Single	Transparent cover/door	Yes
With lock	Yes	Inner depth	100 mm	Number of rows	1
Extension possible	No	Housing material	Plastic	With mounting plate	No
Signal passing door	No	Type of closure	Cylinder	Earthing terminal block	No
Neutral terminal block	No	DIN-rail	Yes	EMC-version	No

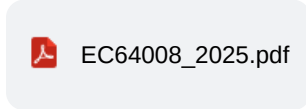
Technical Characteristics

dimensions	200x180x100 mm	Power dissipation	12 W
-------------------	----------------	--------------------------	------

Documentation available for download



Dimensions and technical drawings



Barcode



8032793873143

Unit

1 NR

0.19x0.205x0.105 [m]

0.8571 [kg]



8059307214735

Cardboard

14 NR

0.605x0.4x0.35 [m]

11.9994 [kg]