

EC64004



**WALL SURFACE WATERTIGHT
EMERGENCY 4 MOD. ENCLOSURE
150X170X100 RED**



Enclosures > Special application systems > Emergency line > Modular enclosures > Small distribution board > Emergency modular enclosures

Technical Symbols/Marks/Approvals

IP65	GWT 650°	CE	RoHS II	MADE IN ITALY
------	----------	----	---------	---------------

Norms

EN 60670-1 EN 60670-24

Etim

GROUP EG000023 - Distribution boards

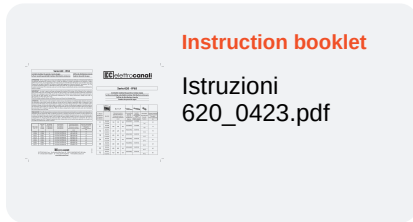
CLASS EC000214 - Small distribution board

Mounting method	Surface mounted	Degree of protection (IP)	IP65	Width in number of modular spacings	4
Colour	Red	Width	150 mm	Height	170 mm
Depth	100 mm	RAL-number	3000	UV resistant	Yes
Type of covering	Door	Type of door	Single	Transparent cover/door	Yes
With lock	Yes	Inner depth	100 mm	Number of rows	1
Extension possible	No	Housing material	Plastic	With mounting plate	No
Signal passing door	No	Type of closure	Cylinder	Earthing terminal block	No
Neutral terminal block	No	DIN-rail	Yes	EMC-version	No

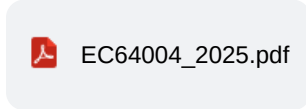
Technical Characteristics

dimensions	150x170x100 mm	Power dissipation	10 W
-------------------	----------------	--------------------------	------

Documentation available for download



Dimensions and technical drawings



Barcode



8032793873136

Unit

1 NR

0.165x0.175x0.105 [m]

0.6386 [kg]



8059307214728

Cardboard

22 NR

0.605x0.4x0.35 [m]

14.0492 [kg]