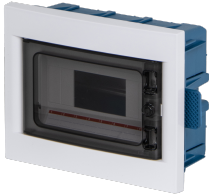


EC63508B



**DRY LINING MODULAR ENCLOSURE 8
MODULES - TRANSPARENT DOOR -
RAL9001**



Enclosures > Recessed > Recessed modular enclosures > Series 635 - dry lining modular enclosures > Small distribution board > White -transparent door

Technical Symbols/Marks/Approvals



Norms

EN 60670-1 EN 60670-24

Description

Flush-mounting distribution board for lightweight walls - plasterboard or wood. Base made of blue, high-impact technopolymer with low smoke emission. Resistance to abnormal heat up to 850°C (GWT). Halogen-free ABS technopolymer cover. Reversible cover. Smoked polycarbonate door. Option to install a cylinder safety lock. Door closure with spring-loaded sliding inserts. High-gloss finish on outer frame and door. Self-adhesive circuit identification labels included. Blanking covers for unused modules included. Galvanized steel DIN rail mounted on a removable and adjustable support for perfect horizontal alignment. Base fixing to the structure via brackets. Manufactured in compliance with EN 60670-1:2005 and EN 60670-22:2013 standards. Installation temperature range: minimum -15°C, maximum +60°C. IP40 protection degree.
External dimensions 240x194 mm
Base depth 80 mm
8 DIN modules
Dissipated power 18 W

Etim

GROUP EG000023 - Distribution boards
CLASS EC000214 - Small distribution board

Mounting method	Flush-mounted/hollow wall	Degree of protection (IP)	IP40	Width in number of modular spacings	8
Built-in depth	80 mm	Colour	White	Width	240 mm
Height	194 mm	Depth	100 mm	Built-in height	80 mm
RAL-number	9001	Type of covering	Door	Type of door	Single
Transparent cover/door	Yes	With lock	No	Inner depth	80 mm
Number of rows	1	Extension possible	No	Housing material	Plastic
With mounting plate	No	Type of closure	Other	Earthing terminal block	No
Neutral terminal block	No	DIN-rail	Yes	EMC-version	No

Technical Characteristics

dimensions

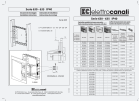
240x194x80 mm

Power dissipation

18 W


Documentation available for download

Instruction booklet



Istruzioni 630-
635_0125_0125.pdf

Dimensions and technical drawings

 EC63508_2025.pdf

Barcode



8053676576913

Unit

1 NR

0.2x0.245x0.105 [m]

0.7778 [kg]



8059307214681

Cardboard

9 NR

0.605x0.4x0.35 [m]

7.0002 [kg]