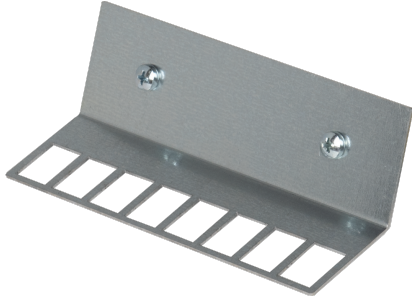


**EC633PP**



**METAL COMPONENT PLATE WITH 8 SLOTS FOR KEYSTONE JACKS**

Enclosures > Recessed > Recessed modular enclosures > Series 633-638 - multimedia modular enclosures > Mounting accessories (enclosure/cabinet) > Multimedia enclosure accessories



**Technical Symbols/Marks/Approvals**



**Norms**

EN 60670-1 EN 60670-24

**Description**

Component mounting plate featuring 8 slots for keystone jacks for QDSA distribution boards. Complete with clip-on attachment for DIN rail.  
Dimensions 150x83 mm  
Dimensions 96x52x25 mm

**Etim**

**GROUP EG000011 - Enclosures/cabinets**  
**CLASS EC002625 - Mounting accessories (enclosure/cabinet)**

<b>Material</b>	Steel	<b>Width</b>	150 mm	<b>Height</b>	83 mm
<b>Depth</b>	1 mm	<b>Type of accessory/spare part</b>	Adaptation for wiring systems	<b>Accessory</b>	Yes
<b>Spare part</b>	No				

## Barcode



8032636768346

**Unit**

1 NR

0.05 [kg]