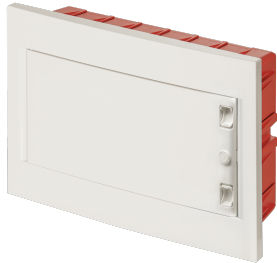


EC63018C



**FLUSH-MOUNT MOD. ENCL. IP40
430X260X80 mm 18 MOD. WHITE
SOLID DOOR**



Enclosures > Recessed > Recessed modular enclosures > Series 630 - masonry modular enclosures > Small distribution board > White - blank door

Technical Symbols/Marks/Approvals



Norms

EN 60670-1 EN 60670-24

Description

Flush-mounting distribution board for masonry walls. Base made of high-impact technopolymer with low smoke emission. Resistance to abnormal heat up to 650°C (GWT). Halogen-free ABS technopolymer cover. Reversible cover. Halogen-free ABS technopolymer door. Option to install a cylinder safety lock. Door closure with spring-loaded sliding inserts. High-gloss finish on outer frame and door. Self-adhesive circuit identification labels included. Blanking covers for unused modules included. Galvanized steel DIN rail mounted on a removable and adjustable support for perfect horizontal alignment. Manufactured in compliance with EN 60670-1:2005 and EN 60670-22:2013 standards. Installation temperature range: minimum -15°C, maximum +60°C. IP40 protection degree. External dimensions 430x260 mm. Base depth 80 mm. 18 DIN modules. Dissipated power 30 W.

Etim

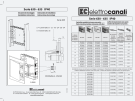

GROUP EG000023 - Distribution boards
CLASS EC000214 - Small distribution board

Mounting method	Flush-mounted	Degree of protection (IP)	IP40	Width in number of modular spacings	18
Built-in depth	80 mm	Colour	White	Width	430 mm
Height	260 mm	Depth	100 mm	Built-in height	80 mm
RAL-number	9001	Type of covering	Door	Type of door	Single
Transparent cover/door	No	With lock	No	Inner depth	80 mm
Number of rows	1	Extension possible	No	Housing material	Plastic
With mounting plate	No	Type of closure	Other	Earthing terminal block	No
Neutral terminal block	No	DIN-rail	Yes	EMC-version	No


Technical Characteristics

dimensions 430x260x80 mm **Power dissipation** 30 W


Documentation available for download

<p>Instruction booklet</p>  <p>Istruzioni 630-635_0125_0125.pdf</p>	<p>Certification</p>  <p>Serie 630 IMQ_CA02.01745_2020.pdf</p>
---	--

Dimensions and technical drawings

 EC63018_2025.pdf

Barcode



8053676578405

Unit

1 NR

0.505x0.275x0.155 [m]

1.689 [kg]