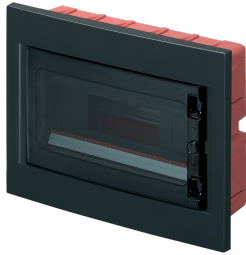


EC63012N

**FLUSH MOUNT.MOD.ENCLOSURE IP40
DIM. 320X240X80 12 MOD. BLACK**



Enclosures > Recessed > Recessed modular enclosures > Series 630 - masonry modular enclosures > Small distribution board > Black -transparent door

Technical Symbols/Marks/Approvals



Norms

EN 60670-1 EN 60670-24

Etim

GROUP EG000023 - Distribution boards

CLASS EC000214 - Small distribution board

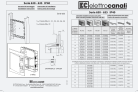
Mounting method	Flush-mounted	Degree of protection (IP)	IP40	Width in number of modular spacings	12
Built-in depth	80 mm	Colour	Black	Width	320 mm
Height	240 mm	Depth	100 mm	Built-in height	80 mm
RAL-number	7021	Type of covering	Door	Type of door	Single
Transparent cover/door	Yes	With lock	No	Inner depth	80 mm
Number of rows	1	Extension possible	No	Housing material	Plastic
With mounting plate	No	Type of closure	Other	Earthing terminal block	No
Neutral terminal block	No	DIN-rail	Yes	EMC-version	No

Technical Characteristics

dimensions	320x240x80 mm	Power dissipation	25 W
-------------------	---------------	--------------------------	------

Documentation available for download

Instruction booklet



Istruzioni 630-635_0125_0125.pdf

Certification




Serie 630
IMQ_CA02.01745_2020.pdf

Dimensions and technical drawings

 EC63012_2025.pdf

Barcode



8032636763297

Unit

1 NR

0.25x0.33x0.105 [m]

1.1429 [kg]



8059307214612

Cardboard

7 NR

0.4x0.605x0.35 [m]

8.0003 [kg]