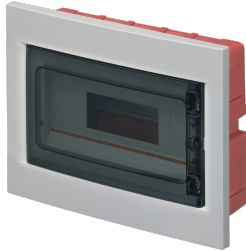


**EC63012**



**FLUSH MOUNT.MOD.ENCLOSURE IP40  
DIM. 320X240X80 12 MOD. GREY**



Enclosures > Recessed > Recessed modular enclosures > Series 630 - masonry modular enclosures > Small distribution board > Grey -transparent door

**Technical Symbols/Marks/Approvals**



**Norms**

EN 60670-1 EN 60670-24

**Description**

Flush-mounting distribution board for masonry walls. Base made of high-impact technopolymer with low smoke emission. Resistance to abnormal heat up to 650°C (GWT). Halogen-free ABS technopolymer cover. Reversible cover. Smoked polycarbonate door. Option to install a cylinder safety lock. Door closure with spring-loaded sliding inserts. High-gloss finish on outer frame and door. Self-adhesive circuit identification labels included. Blanking covers for unused modules included. Galvanized steel DIN rail mounted on a removable and adjustable support for perfect horizontal alignment. Manufactured in compliance with EN 60670-1:2005 and EN 60670-22:2013 standards. Installation temperature range: minimum -15°C, maximum +60°C. IP40 protection degree.

External dimensions 320x240 mm

Base depth 80 mm

12 DIN modules

Dissipated power 25 W

**Etim**

**GROUP EG000023 - Distribution boards**

**CLASS EC000214 - Small distribution board**

<b>Mounting method</b>	Flush-mounted	<b>Degree of protection (IP)</b>	IP40	<b>Width in number of modular spacings</b>	12
<b>Built-in depth</b>	80 mm	<b>Colour</b>	Grey	<b>Width</b>	320 mm
<b>Height</b>	240 mm	<b>Depth</b>	100 mm	<b>Built-in height</b>	80 mm
<b>RAL-number</b>	7035	<b>Type of covering</b>	Door	<b>Type of door</b>	Single
<b>Transparent cover/door</b>	Yes	<b>With lock</b>	No	<b>Inner depth</b>	80 mm
<b>Number of rows</b>	1	<b>Extension possible</b>	No	<b>Housing material</b>	Plastic
<b>With mounting plate</b>	No	<b>Type of closure</b>	Other	<b>Earthing terminal block</b>	No
<b>Neutral terminal block</b>	No	<b>DIN-rail</b>	Yes	<b>EMC-version</b>	No

## Technical Characteristics

**dimensions**

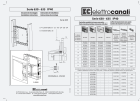
320x240x80 mm

**Power dissipation**

25 W

## Documentation available for download

### Instruction booklet



Istruzioni 630-  
635\_0125\_0125.pdf

### Certification



Serie 630  
IMQ\_CA02.01745\_  
2020.pdf

## Dimensions and technical drawings



EC63012\_2025.pdf

## Barcode



8032636763266

### Unit

1 NR

0.25x0.33x0.105 [m]

1.1429 [kg]



8059307210249

### Cardboard

7 NR

0.605x0.4x0.35 [m]

8.0003 [kg]