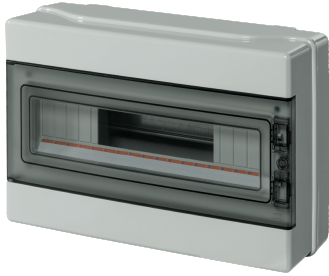


EC62018

**WALL-MOUNT MOD.ENCL. IP65
400x265x140mm 18 MOD. GREY**



Enclosures > Wall-mount > Wall modular enclosures > Series 620 - ip65 modular enclosures > Small distribution board > Grey

Technical Symbols/Marks/Approvals



Norms

EN 60670-1 EN 60670-24

Etim

GROUP EG000023 - Distribution boards

CLASS EC000214 - Small distribution board


Mounting method	Surface mounted	Degree of protection (IP)	IP65	Width in number of modular spacings	18
Colour	Grey	Width	400 mm	Height	265 mm
Depth	140 mm	RAL-number	7035	UV resistant	Yes
Type of covering	Door	Type of door	Single	Transparent cover/door	Yes
With lock	No	Inner depth	140 mm	Number of rows	1
Extension possible	No	Housing material	Plastic	With mounting plate	No
Signal passing door	No	Type of closure	Other	Earthing terminal block	No
Neutral terminal block	No	DIN-rail	Yes	EMC-version	No

Technical Characteristics

dimensions	400x265x140 mm	Power dissipation	25 W
-------------------	----------------	--------------------------	------

Documentation available for download

Instruction booklet




Istruzioni
620_0423.pdf

Certification



Serie 620
IMQ_CA02.00788_
2018.pdf

Dimensions and technical drawings



EC62018_2025.pdf

Barcode



8053676578504

Unit

1 NR

0.505x0.275x0.155 [m]

2.253 [kg]