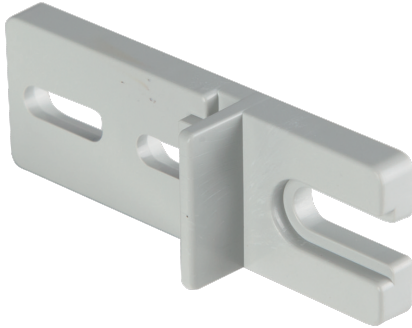


EC600SF

STANDARD BRACKET FOR WALL-MOUNT

Industrial > Distribution boards > Distribution boards > Accessories for distribution boards > Mounting clamp for junction boxes > Wall-mount bracket



Technical Symbols/Marks/Approvals



Norms

EN 60670-1 EN 60670-22

Description

Double insulation and IP rating maintenance bracket - Made of impact-resistant ABS-based technopolymer. Resistance to abnormal heat up to 650°C (GWT).

Dimensions: 20x13x59 mm.

Complete with fixing screws.

For 600-610-620-690 distribution boards - 4xx/C6-C7-C8-C9-C10 boxes.

Etim

GROUP EG000048 - Connection material (electrotechnical)

CLASS EC002362 - Mounting clamp for junction boxes

Model Single nozzle

Barcode



8050880882632

Cardboard

50 NR

0.05 [kg]