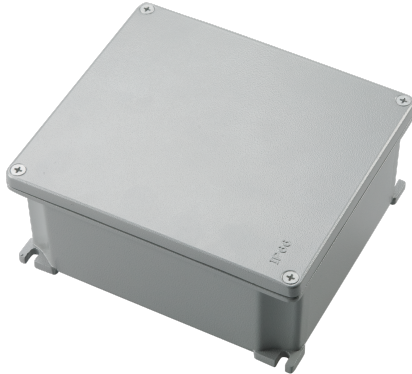


## EC485C1

### ALUMINIUM WALL-MOUNT JUNCTION BOX 90X90X53 mm



Enclosures > Wall-mount > Wall-mount junction boxes > Series 485 - aluminium boxes > Junction boxes

#### Technical Symbols/Marks/Approvals

IP66

IK07

MADE  
IN  
ITALY

#### Norms

EN 60670-1 EN 60670-22

## Description

Junction box in aluminum alloy EN AB 46100 according to UNI EN 1676 standards. Oven-baked coating with epoxy resins. Impact resistance rating IK07. Expanded Vinyl Nitrile gasket. AISI 304 stainless steel screws. Complete with grounding kit. Wall mounting brackets incorporated into the base. Installation and operating temperature range: minimum  $-25^{\circ}\text{C}$ , maximum  $+60^{\circ}\text{C}$ . Protection degree IP66.

External dimensions 100x100x59 mm

## Etim

GROUP EG000048 - Connection material (electrotechnical)

CLASS EC002600 - Box/housing for surface mounting on the wall/ceiling

<b>Mounting method</b>	Wall-/ceiling mounting	<b>Degree of protection (IP)</b>	IP66	<b>Material</b>	Aluminium
<b>Halogen free</b>	Yes	<b>Surface protection</b>	Lacquered	<b>Colour</b>	Grey
<b>Width</b>	90 mm	<b>Depth</b>	53 mm	<b>Model</b>	Junction box
<b>Length</b>	90 mm	<b>Working temperature</b>	$-40-125^{\circ}\text{C}$	<b>Explosion-tested version</b>	No
<b>For Ex-zone gas</b>	None	<b>For Ex-zone dust</b>	None	<b>Cover model</b>	Blind cover
<b>Circuit integrity</b>	None	<b>Equipped with</b>	Potential equalization	<b>Shape</b>	Rectangular
<b>Number of inlets</b>	0	<b>Inlet from the rear</b>	No	<b>Transparent cover</b>	No
<b>Connectable</b>	No	<b>Mounting in the soil</b>	No	<b>Mounting under water</b>	No
<b>Type of housing feed-through</b>	None	<b>Cover attachment</b>	Screwed	<b>Castable</b>	Yes
<b>Casting compound included</b>	No	<b>Sealable</b>	No	<b>With screening</b>	No
<b>Weatherproof</b>	Yes				

## Barcode



8033954874214

**Unit**

1 NR

0.2813 [kg]



8059307214124

**Cardboard**

32 NR

9.0016 [kg]