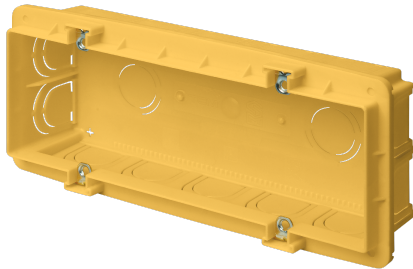


EC37106

HIGH VOLUME FLUSH-MOUNT MODULAR BOX 6 MOD. 178X70X48 mm - 100mm C.HOLE DIST.



Enclosures > Recessed > Boxes for wiring devices > Series 37
- masonry recessed boxes > Flush mount junction boxes for
wiring devices > Rectangular boxes - yellow

Technical Symbols/Marks/Approvals



Norms

EN 60670-1 CEI 23-74

Description

Flush-mounting box for masonry walls. Made of shock-resistant, halogen-free technopolymer in yellow or blue. Resistance to abnormal heat: 650°C (Glow Wire Test - GWT). High-capacity containers: over 30% more volume than standard rectangular boxes. For the installation of domestic wiring devices. Lateral knockouts for easy installation and conduit entry up to 25 mm in diameter. Manufactured in compliance with EN 60670-1:2021 +A11:2021 standards. Installation temperatures: minimum -15°C, maximum +60°C.
Dimensions: 178x70x48 mm
6/7 modules, 100 mm center-to-center distance

Etim

GROUP EG000048 - Connection material (electrotechnical)

CLASS EC002601 - Box/housing for built-in mounting in the wall/ceiling

Max. conductor cross section	0	Mounting method	Flush-mounted	Degree of protection (IP)	IP00
Material	Plastic	Halogen free	Yes	Surface protection	Untreated
Colour	Yellow	Width	178 mm	Model	Other
Length	70 mm	Diameter	0 mm	Cover model	None
Inner depth	48 mm	Circuit integrity	None	Equipped with	None
Shape	Rectangular	Number of inlets	16	Inlet from the rear	Yes
Compliant with BS 4662	No	Couplable	No	Transparent cover	No
Pipe locking	No	Construction type	Built-in installation box (device box)	Airtight	No
For tube diameter	20/25 mm	Cover attachment	Screwed	Sealable	No
With screening	No	Provided with revolving ring	No	Depth	0-48 mm
For number of device inserts	6	Mounting switching equipment	Screwing	With screws	No
Housing feed-through by break-out opening	Yes	Housing feed-through by seal membrane	No	Housing feed-through by nozzle	No
Housing feed-through by step membrane	No	Pipe locking optional	No	Number of included spouts	0
Number of poles of the clamp	0	Clamp position fixed	No	Luminaire hook mounting	No
Nozzle	None	Special application	None	With partition panel	No

Technical Characteristics

wheelbase 100 mm

Documentation available for download



Certification

Serie 37100
IMQ_CA02.01669_
2023.pdf

Barcode



8054320283805

Pack

10 NR

0.19x0.075x0.505 [m]

0.667 [kg]



8057711599660

Cardboard

150 NR

0.405x0.605x0.55 [m]

10.005 [kg]