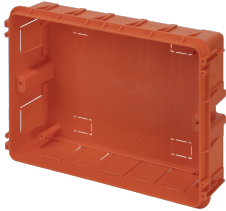


**EC63212F**

**FLUSH-MOUNT BOX FOR 12 WAYS ENCLOSURE - BRICK-WALLS**



Enclosures > Recessed > Recessed modular enclosures > Series 632 essenza - modular enclosures > Small distribution board > Recessed masonry box

**Technical Symbols/Marks/Approvals**



**Norms**

EN 60670-1 EN 60670-24

**Description**

Flush-mounting back box for masonry walls. Made of high-impact technopolymer with low smoke emission. Resistance to abnormal heat up to 650°C (GWT). Manufactured in compliance with EN 60670-1:2005 and EN 60670-22:2013 standards. Installation temperature range: minimum -15°C, maximum +60°C.  
Dimensions 296x219 mm  
Depth 80 mm  
12 DIN modules

**Etim**

**GROUP EG000023 - Distribution boards**  
**CLASS EC000214 - Small distribution board**

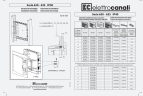
<b>Mounting method</b>	Flush-mounted	<b>Width in number of modular spacings</b>	12	<b>Built-in depth</b>	80 mm
<b>Colour</b>	Orange	<b>Width</b>	296 mm	<b>Height</b>	219 mm
<b>Depth</b>	80 mm	<b>Built-in height</b>	80 mm	<b>UV resistant</b>	No
<b>Transparent cover/door</b>	No	<b>With lock</b>	No	<b>Inner depth</b>	76 mm
<b>Number of rows</b>	1	<b>Extension possible</b>	No	<b>Housing material</b>	Plastic
<b>With mounting plate</b>	No	<b>Type of closure</b>	Other	<b>DIN-rail</b>	No
<b>EMC-version</b>	No				

**Technical Characteristics**

**dimensions** 296x219x80 mm

## Documentation available for download

### Instruction booklet



Istruzioni 630-  
635\_0125\_0125.pdf

## Dimensions and technical drawings



EC63212\_FONDO\_2025.pdf

## Barcode



8055035962887

### Unit

1 NR

0.25x0.33x0.11 [m]

0.4094 [kg]



8055035962993

### Cardboard

5 NR

0.6x0.41x0.28 [m]

2.047 [kg]