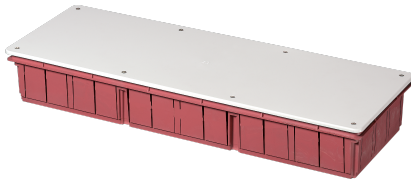


## EC350C9

### FLUSH MOUNTING JUNCTION BOX WITH LID DIM. 480X160X70



Enclosures > Recessed > Recessed junction boxes > Series 350 - masonry > Flush mount junction boxes > Orange boxes

#### Technical Symbols/Marks/Approvals



#### Norms

EN 60670-1 EN 60670-22

### Description

Recessed junction box for masonry walls. Made of impact-resistant, halogen-free technopolymer. Complete with lid and fixing screws. Paintable embossed lid. Resistance to abnormal heat up to 650°C (GWT). Manufactured in accordance with EN 60670-1:2005, EN 60670-22:2006. Installation temperatures: minimum -15°C, maximum +60°C. IP40 protection rating.

Dimensions: 180x160x70 mm

Designed for 3 compartments

## Etim

### GROUP EG000048 - Connection material (electrotechnical)

### CLASS EC002601 - Box/housing for built-in mounting in the wall/ceiling

<b>Max. conductor cross section</b>	0	<b>Mounting method</b>	Flush-mounted	<b>Degree of protection (IP)</b>	IP40
<b>Material</b>	Plastic	<b>Halogen free</b>	Yes	<b>Surface protection</b>	Untreated
<b>Colour</b>	Orange	<b>Width</b>	480 mm	<b>Model</b>	Other
<b>Length</b>	160 mm	<b>Diameter</b>	0 mm	<b>Cover model</b>	Blind cover
<b>Inner depth</b>	69 mm	<b>Circuit integrity</b>	None	<b>Equipped with</b>	None
<b>Shape</b>	Rectangular	<b>Number of inlets</b>	48	<b>Inlet from the rear</b>	Yes
<b>Compliant with BS 4662</b>	No	<b>Couplable</b>	No	<b>Transparent cover</b>	No
<b>Pipe locking</b>	No	<b>Construction type</b>	Cable junction box	<b>Airtight</b>	No
<b>For tube diameter</b>	Other	<b>Cover attachment</b>	Screwed	<b>Sealable</b>	No
<b>With screening</b>	No	<b>Provided with revolving ring</b>	No	<b>Depth</b>	0-69 mm
<b>For number of device inserts</b>	0	<b>Mounting switching equipment</b>	Screwing	<b>With screws</b>	Yes
<b>Housing feed-through by break-out opening</b>	Yes	<b>Housing feed-through by seal membrane</b>	No	<b>Housing feed-through by nozzle</b>	No
<b>Housing feed-through by step membrane</b>	No	<b>Pipe locking optional</b>	No	<b>Number of included spouts</b>	0
<b>Number of poles of the clamp</b>	0	<b>Clamp position fixed</b>	No	<b>Luminaire hook mounting</b>	No
<b>Nozzle</b>	None	<b>Special application</b>	None	<b>With partition panel</b>	No

## Technical Characteristics

Preparation for compartments/DIN rails 3 / -

## Documentation available for download



**Certification**

Serie 350  
IMQ\_CA02.01670\_  
2018.pdf

## Barcode



8032636760685

**Unit**

1 NR

0.195x0.075x0.515 [m]

0.6389 [kg]



8057711599608

**Cardboard**

18 NR

0.405x0.605x0.55 [m]

11.5002 [kg]