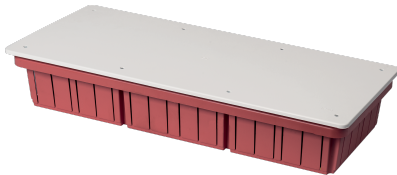


## EC350C10

### FLUSH MOUNTING JUNCTION BOX WITH LID DIM. 520X200X90



Enclosures > Recessed > Recessed junction boxes > Series 350 - masonry > Flush mount junction boxes > Orange boxes



#### Technical Symbols/Marks/Approvals



#### Norms

EN 60670-1 EN 60670-22

## Description

Flush-mounted junction box for masonry walls. Made of impact-resistant, halogen-free technopolymer. Complete with lid and fixing screws. Paintable embossed lid. Resistance to abnormal heat up to 650°C (GWT). Manufactured in compliance with EN 60670-1:2005 and EN 60670-22:2006. Installation temperatures: minimum -15°C, maximum +60°C. IP40 protection rating. The box is designed for a DIN rail that can be installed on the bottom in compliance with the 64-8 system standard, which requires its use for the installation of devices that dissipate significant power inside the junction boxes. Suitable for installing power supplies and similar devices.

Dimensions: 520x200x90 mm

Designed for 3 compartments

Designed for 3 DIN rails

## Etim

### GROUP EG000048 - Connection material (electrotechnical)

### CLASS EC002601 - Box/housing for built-in mounting in the wall/ceiling

<b>Max. conductor cross section</b>	0	<b>Mounting method</b>	Flush-mounted	<b>Degree of protection (IP)</b>	IP40
<b>Material</b>	Plastic	<b>Halogen free</b>	Yes	<b>Surface protection</b>	Untreated
<b>Colour</b>	Orange	<b>Width</b>	512 mm	<b>Model</b>	Other
<b>Length</b>	198 mm	<b>Diameter</b>	0 mm	<b>Cover model</b>	Blind cover
<b>Inner depth</b>	87 mm	<b>Circuit integrity</b>	None	<b>Equipped with</b>	None
<b>Shape</b>	Rectangular	<b>Number of inlets</b>	50	<b>Inlet from the rear</b>	Yes
<b>Compliant with BS 4662</b>	No	<b>Couplable</b>	No	<b>Transparent cover</b>	No
<b>Pipe locking</b>	No	<b>Construction type</b>	Cable junction box	<b>Airtight</b>	No
<b>For tube diameter</b>	Other	<b>Cover attachment</b>	Screwed	<b>Sealable</b>	No
<b>With screening</b>	No	<b>Provided with revolving ring</b>	No	<b>Depth</b>	0-87 mm
<b>For number of device inserts</b>	0	<b>Mounting switching equipment</b>	Screwing	<b>With screws</b>	Yes
<b>Housing feed-through by break-out opening</b>	Yes	<b>Housing feed-through by seal membrane</b>	No	<b>Housing feed-through by nozzle</b>	No
<b>Housing feed-through by step membrane</b>	No	<b>Pipe locking optional</b>	No	<b>Number of included spouts</b>	0
<b>Number of poles of the clamp</b>	0	<b>Clamp position fixed</b>	No	<b>Luminaire hook mounting</b>	No
<b>Nozzle</b>	None	<b>Special application</b>	None	<b>With partition panel</b>	No

## Technical Characteristics

Preparation for compartments/DIN rails 3 / 3

## Documentation available for download



## Barcode



8053676579914

**Unit**

1 NR

0.23x0.095x0.545 [m]

1.046 [kg]



8059307213226

**Cardboard**

8 NR

0.405x0.605x0.55 [m]

8.368 [kg]