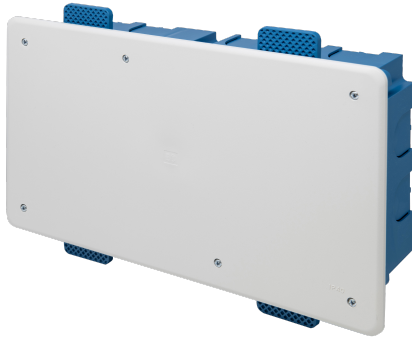


EC340107

**DRY LINING JUNCTION BOX
300x150x75 mm - BLUE**



Enclosures > Recessed > Recessed junction boxes > Series 340 - dry lining modular enclosures > Flush mount junction boxes

Technical Symbols/Marks/Approvals

IP40

GWT
850°

CE

MADE
IN
ITALY

Norms

EN 60670-1 EN 60670-22

Description

Flush-mounted junction box for lightweight walls - plasterboard or wood. Made of impact-resistant, low-smoke blue technopolymer. Complete with lid and fixing screws. Paintable embossed lid. Resistance to abnormal heat up to 850°C (GWT). 68 mm diameter drilling centers integrated into the bottom of the box. Fixing to the structure with lugs. Manufactured in compliance with EN 60670-1:2005, EN 60670-22:2006. Installation temperatures: minimum -5°C, maximum +60°C. IP40 protection rating. Dimensions: 300x150x75 mm

Etim

GROUP EG000048 - Connection material (electrotechnical)

CLASS EC002601 - Box/housing for built-in mounting in the wall/ceiling

Mounting method	Hollow wall	Degree of protection (IP)	IP40	Material	Plastic
Halogen free	No	Surface protection	Untreated	Colour	Blue
Width	300 mm	Model	Other	Length	150 mm
Cover model	Blind cover	Inner depth	75 mm	Circuit integrity	None
Equipped with	None	Shape	Rectangular	Number of inlets	28
Inlet from the rear	Yes	Compliant with BS 4662	No	Couplable	No
Transparent cover	No	Pipe locking	No	Construction type	Cable junction box
Airtight	No	For tube diameter	Other	Cover attachment	Screwed
Sealable	No	With screening	No	Provided with revolving ring	No
Depth	0-75 mm	With screws	Yes	Housing feed-through by break-out opening	Yes
Housing feed-through by seal membrane	No	Housing feed-through by nozzle	No	Housing feed-through by step membrane	No
Pipe locking optional	No	Number of included spouts	0	Clamp position fixed	No
Luminaire hook mounting	No	Nozzle	None	Special application	None
With partition panel	No				

Barcode




8054382042631

Unit

1 NR

0.185x0.08x0.32 [m]

0.48 [kg]



8033576772172

Cardboard

23 NR

0.405x0.605x0.55 [m]

11.04 [kg]