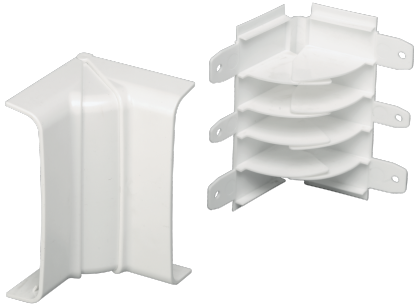


**EC20203**



**VARIABLE INTERNAL ANGLE 130X28  
WHITE RAL 9001**



Trunkings > Wall and ceiling > Skirting and wall trunkings > Series 20 - trunking fittings > Internal bend for skirting trunkings

**Technical Symbols/Marks/Approvals**

IP40	IK08	GWT 650°	CE	RoHS II		MADE IN ITALY
------	------	----------	----	---------	--	---------------

**Norms**

EN 50085-1 EN 50085-2-1

**Description**

Internal angles composed of a flexible inner section, quickly attached with screws, which allows for insulation and continuous separation of cables in their compartments. Rigid cover, adjustable from 70° to 110°, snaps on.

**Etim**

**GROUP EG000006 - Installation ducts for wall and ceiling**

**CLASS EC000851 - Inner corner for skirting duct**

<b>Degree of protection (IP)</b>	IP40	<b>Material</b>	Plastic	<b>Material quality</b>	Acrylonitrile butadiene styrene (ABS)
<b>Halogen free</b>	Yes	<b>Colour</b>	White	<b>Impact strength</b>	IK08
<b>Height</b>	130 mm	<b>Depth</b>	28 mm	<b>Model</b>	Base unit and cover
<b>RAL-number</b>	9001	<b>Sealing lip cover</b>	None	<b>Decoration</b>	None
<b>With carpet border</b>	No	<b>Angle</b>	70-110 °		

**Documentation available for download**

**Certification**  
Battiscopa Serie 20.pdf

**General data sheets**  
SCI\_20 BATT.pdf

## Barcode



8032793874614

**Unit**

1 NR

0.12 [kg]



8050880881000

**Cardboard**

5 NR

0.235x0.285x0.105 [m]

0.6 [kg]