

**ECTT12040B**

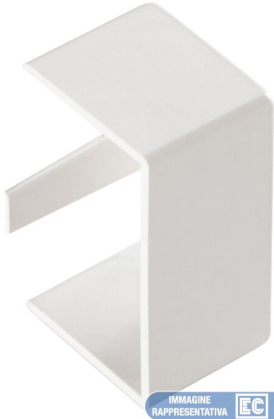


IMMAGINE RAPPRESENTATIVA EC REPRESENTATIVE IMAGE

**END CAP DIM. 120X40 WHITE**

Trunkings > Wall and ceiling > Solid cable trunkings > Series cp - fittings > End cap for cable trunkings

**Technical Symbols/Marks/Approvals**



**Norms**

EN 50085-1 EN50085-2-1

**Description**

End cap for closing straight sections of duct. Snap-on connection to the duct.

**Etim**

**GROUP EG000006 - Installation ducts for wall and ceiling**  
**CLASS EC000873 - End piece for wall duct**

<b>Suitable for</b>	Left/right	<b>Degree of protection (IP)</b>	IP40	<b>Material</b>	Plastic
<b>Material quality</b>	Acrylonitrile butadiene styrene (ABS)	<b>Halogen free</b>	Yes	<b>Anti-bacterial treatment</b>	No
<b>Surface protection</b>	Untreated	<b>Colour</b>	White	<b>Impact strength</b>	IK07
<b>Type of fastening</b>	Snap on	<b>Width</b>	120 mm	<b>Depth</b>	40 mm
<b>Model</b>	Symmetric	<b>RAL-number</b>	9001	<b>With protective foil</b>	No
<b>Working temperature</b>	-5-60 °C	<b>Joint cover</b>	No		

**Documentation available for download**

**Certification**  
Canali CPH  
IMQ\_CA02.06517\_2020.pdf

**Certification**  
Canali e Minic Serie  
MC-CP.pdf

**Certification**  
LICENCE  
669941\_CP-MC.pdf

## Barcode



8054320284260

**Cardboard**

20 NR

0.165x0.175x0.105 [m]

0.5 [kg]