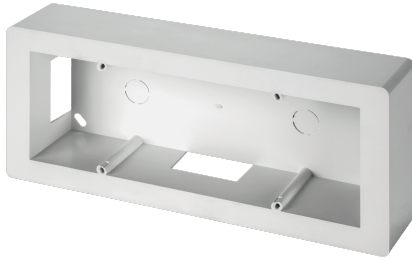


## ECSPA90B

### 6-MODULE WALL ADAPTOR BOX 100 mm HOLE CENTRE DISTANCE - 218X94X46

Trunkings > Wall and ceiling > Miniature solid trunkings > Series mc-mca-ma - fittings  
> Modular boxes for wiring devices > Box for wiring devices



#### Technical Symbols/Marks/Approvals



#### Norms

EN 50085-1 EN 50085-2-1

## Description

Appliance box with 100 mm center distance. Fixtures are secured using standard brackets. Side knockout for mini-trunking.

## Etim

**GROUP EG000013 - Domestic switching devices**


**CLASS EC000080 - Surface mounted box for flush-mounted switching equipment**

<b>Degree of protection (IP)</b>	IP40	<b>RAL-number (similar)</b>	9001	<b>Number of units</b>	6
<b>Mounting direction</b>	Horizontal	<b>Material</b>	Plastic	<b>Material quality</b>	Thermoplastic
<b>Halogen free</b>	Yes	<b>Surface protection</b>	Untreated	<b>Surface finishing</b>	Glossy
<b>Colour</b>	White	<b>Transparent</b>	No	<b>Width</b>	218 mm
<b>Height</b>	94 mm	<b>Depth</b>	46 mm	<b>Assembly arrangement</b>	Surface mounted box
<b>Shock resistant</b>	Yes	<b>Shape</b>	Rectangular	<b>With cover frame</b>	No
<b>With duct entry</b>	Yes	<b>With cable entry</b>	No	<b>With screw gland entry</b>	No
<b>Number of inlets</b>	0				

## Technical Characteristics

**Description** Scatola per 6/7 moduli standard italiano - 100 mm

## Barcode

 barcode

8053676576876

**Unit**

1 NR

0.1667 [kg]



8033954870711

**Cardboard**

24 NR

4.0008 [kg]