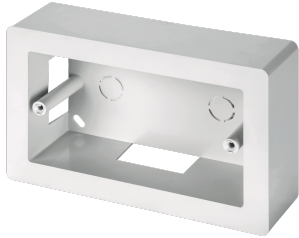


ECSPA80B

**4-MODULE WALL ADAPTOR BOX 108,5 mm HOLE
CENTRE DISTANCE - 151X90X46**



Trunkings > Wall and ceiling > Miniature solid trunkings > Series mc-mca-ma - fittings > Modular boxes for wiring devices > Box for wiring devices

Technical Symbols/Marks/Approvals

IK07	IP40	GWT 650°	CE	RoHS II	MADE IN ITALY
------	------	-------------	----	---------	---------------------

Norms

EN 50085-1 EN 50085-2-1

Description

Appliance box with 108.5 mm center distance. Fixtures are secured using standard brackets. Side knockout for mini-trunking.

Etim

GROUP EG000013 - Domestic switching devices


CLASS EC000080 - Surface mounted box for flush-mounted switching equipment

Degree of protection (IP)	IP40	RAL-number (similar)	9001	Number of units	4
Mounting direction	Horizontal	Material	Plastic	Material quality	Thermoplastic
Halogen free	Yes	Surface protection	Untreated	Surface finishing	Glossy
Colour	White	Transparent	No	Width	151 mm
Height	90 mm	Depth	46 mm	Assembly arrangement	Surface mounted box
Shock resistant	Yes	Shape	Rectangular	With cover frame	No
With duct entry	Yes	With cable entry	No	With screw gland entry	No
Number of inlets	0	Inlet from the rear	Yes		

Technical Characteristics

Description	Scatola per 4 moduli standard italiano - 108,5 mm
--------------------	---

Barcode

 barcode

8053676576869

Unit

1 NR

0.1143 [kg]



8033954870643

Cardboard

35 NR

4.0005 [kg]