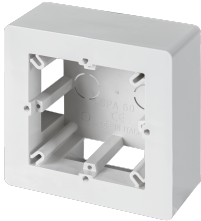


**ECSPA60B**

**ADAPTOR BOX 60/67mm HOLE CENTRE DISTANCE - 97X87X73 mm**



Trunkings > Wall and ceiling > Miniature solid trunkings > Series mc-mca-ma - fittings > Modular boxes for wiring devices > Box for wiring devices

**Technical Symbols/Marks/Approvals**



**Norms**

EN 50085-1 EN50085-2-1

**Description**

Box for 60/67 mm distance between centers of equipment. Fixtures are secured using standard brackets. Side knockout for mini-trunking.

**Etim**

**GROUP EG000013 - Domestic switching devices**

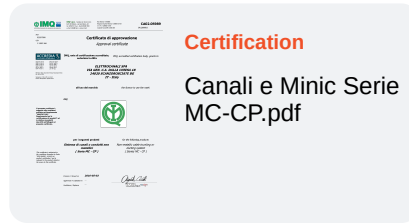
**CLASS EC000080 - Surface mounted box for flush-mounted switching equipment**

|                                  |            |                             |             |                               |                     |
|----------------------------------|------------|-----------------------------|-------------|-------------------------------|---------------------|
| <b>Degree of protection (IP)</b> | IP40       | <b>RAL-number (similar)</b> | 9001        | <b>Number of units</b>        | 1                   |
| <b>Mounting direction</b>        | Horizontal | <b>Material</b>             | Plastic     | <b>Material quality</b>       | Thermoplastic       |
| <b>Halogen free</b>              | Yes        | <b>Surface protection</b>   | Untreated   | <b>Surface finishing</b>      | Glossy              |
| <b>Colour</b>                    | White      | <b>Transparent</b>          | No          | <b>Width</b>                  | 97 mm               |
| <b>Height</b>                    | 87 mm      | <b>Depth</b>                | 73 mm       | <b>Assembly arrangement</b>   | Surface mounted box |
| <b>Shock resistant</b>           | Yes        | <b>Shape</b>                | Rectangular | <b>With cover frame</b>       | No                  |
| <b>With duct entry</b>           | Yes        | <b>With cable entry</b>     | No          | <b>With screw gland entry</b> | No                  |
| <b>Number of inlets</b>          | 0          | <b>Inlet from the rear</b>  | Yes         |                               |                     |

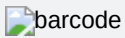
**Technical Characteristics**

**Description** Scatola porta apparecchi interasse 60/67 mm

## Documentation available for download



## Barcode



8032636769008

**Unit**

1 NR

0.1 [kg]



8059606159973

**Cardboard**

25 NR

0.39x0.295x0.15 [m]

2.5 [kg]