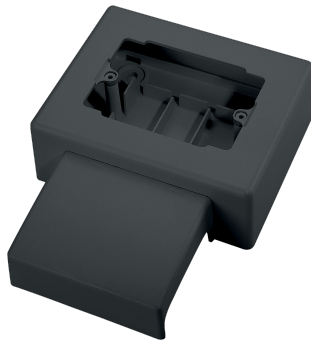


EC20110

**3-MODULE TOWER ADAPTOR BOX
83,5 mm HOLE C.E DISTANCE-SLATE
RAL 7021**



Trunkings > Wall and ceiling > Skirting and wall trunkings > Series 20 - trunking fittings > Modular boxes for wiring devices

Technical Symbols/Marks/Approvals



Norms

EN 50085-1 EN 50085-2-1

Description

The 83.5 mm center-to-center - 3-module appliance box can be used for installing up to 3 Italian standard appliances. With a blank cover, it can be used as a junction box.

The item is composed of four assembled parts: the lower part, which snaps onto the trunking and the wall with 4 screws, serves as an insulating base and a grid separating the various circuits. The upper part is shaped to accommodate the appliance mounting frames. The trunking cover, in addition to providing protection, gives the whole a harmonious and elegant shape. The integrated end cap allows the trunking to be interrupted without the need for an additional end cap.

Etim

GROUP EG000006 - Installation ducts for wall and ceiling

CLASS EC000079 - Appliance box for skirting duct

Degree of protection (IP)	IP40	Mounting direction	Horizontal	Material	Plastic
Halogen free	Yes	Anti-bacterial treatment	No	Colour	Black
Impact strength	IK08	RAL-number	7021	Working temperature	-5-60 °C
Decoration	None	Mounting method installation unit	Standard	Height baseboard duct	70 mm
Depth plinth skirting duct	20 mm	Number of device units	3	Equipped with	None


Technical Characteristics

dimensions 140 x 185 x 50 mm

Documentation available for download



Certification
Battiscopa Serie
20.pdf




General data sheets
SCI_20 BATT.pdf

Barcode



8033576770260
Unit
1 NR
0.24 [kg]



8059307212625
Cardboard
10 NR
0.39x0.295x0.15 [m]
2.4 [kg]