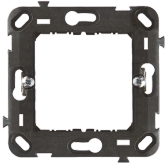


ECL4602

Residential > Wiring devices > Mylife > Mylife international plates > Holder for modular domestic switching devices



Technical Symbols/Marks/Approvals



Norms

EN 60669-1

Etim

GROUP EG000013 - Domestic switching devices

CLASS EC002948 - Holder for modular domestic switching devices

Mounting method	Mounting with screw	Mounting direction	Horizontal and vertical	Number of modules horizontal (module system)	2
Number of modules vertical (module system)	1	Flush-mounted installation	Yes	Suitable for subfloor installation duct box	No
Suitable for wall duct	No	Material	Plastic	Material quality	Thermoplastic
Surface protection	Untreated	Model	Flush-mounted	With screws	Yes
Mounting method of the module inserts	Front side	With built-in installation box	No	Suitable for mounting in round junction box 60 mm	No

Documentation available for download

Certification

IMQ_CA02.03827_2016-10-28.pdf

Barcode



8033576777245

Unit

1 NR

0.025 [kg]



8054320288008

Pack

25 NR

0.15x0.3x0.095 [m]

0.625 [kg]



8057711597024

Cardboard

300 NR

0.305x0.46x0.395 [m]

7.5 [kg]