

**ECKIT150B**



**ADAPTOR BOX SCREW SPACE 83,5  
DIM. 150X60**

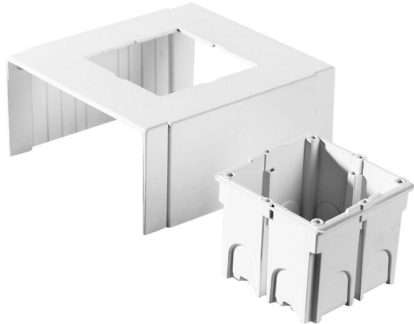


IMMAGINE RAPPRESENTATIVA REPRESENTATIVE IMAGE

Trunkings > Wall and ceiling > Solid cable trunkings > Series cp  
- fittings > Recessed box for cable trunking modular devices

**Technical Symbols/Marks/Approvals**

IP40	GWT 650°	CE	RoHS II		MADE IN ITALY
------	----------	----	---------	--	---------------

**Norms**

EN 50085-1 EN50085-2-1

**Description**

Kit for installing up to 3 devices with 83.5 mm center distance. For 150x60 mm ducts.

**Etim**

**GROUP EG000006 - Installation ducts for wall and ceiling**

**CLASS EC000073 - Junction box for wall duct**

<b>Number of units</b>	3	<b>Material</b>	Plastic	<b>Halogen free</b>	Yes
<b>Model</b>	Open	<b>Mounting method box</b>	Front	<b>Type of device</b>	Other
<b>Mounting track</b>	83.5 mm	<b>Mounting method installation unit</b>	Screwing	<b>Strain relief possibility</b>	Yes
<b>With connection space</b>	Yes				

**Technical Characteristics**

**dimensions** 150 x 60 mm

**Documentation available for download**

**Certification**

Canali CPH  
IMQ\_CA02.06517\_2020.pdf

**Certification**

Canali e Minic Serie  
MC-CP.pdf

## Barcode



8032636768087

**Unit**

1 NR

0.2 [kg]



8054320289135

**Cardboard**

5 NR

0.295x0.39x0.15 [m]

1 [kg]