

ECKIT120B



**ADAPTOR BOX SCREW SPACE 83,5
DIM. 120X60**

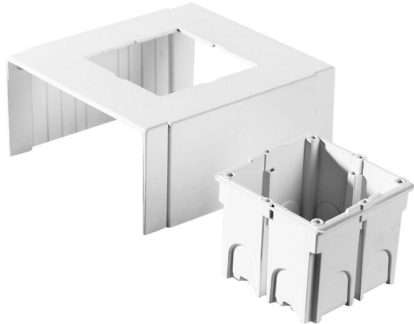


IMMAGINE RAPPRESENTATIVA REPRESENTATIVE IMAGE

Trunkings > Wall and ceiling > Solid cable trunkings > Series cp
- fittings > Recessed box for cable trunking modular devices

Technical Symbols/Marks/Approvals

IP40	GWT 650°	CE	RoHS II		MADE IN ITALY
------	----------	----	---------	--	---------------

Norms

EN 50085-1 EN50085-2-1

Description

Kit for installing up to 3 devices with 83.5 mm center distance. For 120x60 mm ducts.

Etim

GROUP EG000006 - Installation ducts for wall and ceiling

CLASS EC000073 - Junction box for wall duct

Number of units	3	Material	Plastic	Halogen free	Yes
Model	Open	Mounting method box	Front	Type of device	Other
Mounting track	83.5 mm	Mounting method installation unit	Screwing	Strain relief possibility	Yes
With connection space	Yes				

Technical Characteristics

dimensions 120 x 60 mm

Documentation available for download

Certification

Canali CPH
IMQ_CA02.06517_2020.pdf

Certification

Canali e Minic Serie
MC-CP.pdf

Barcode



8032636768056

Unit

1 NR

0.15 [kg]



8054320289159

Cardboard

10 NR

0.295x0.39x0.15 [m]

1.5 [kg]