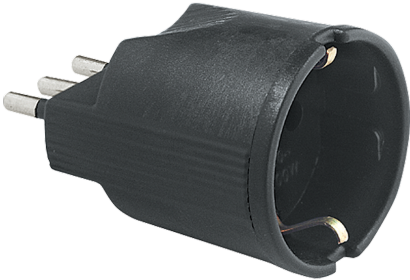


**ECK33514**

**SINGLE ADAPTOR BLACK EXPORT**

Residential > Utility series > Items for domestic use > Adaptors > Plug adapter > Single schuko adaptor



**Technical Symbols/Marks/Approvals**

IP20	UL94 V0	GWT 750°	CE		MADE IN PRC
------	------------	-------------	----	--	-------------------

**Norms**

CEI 23-50 CEI 23-57

**Etim**

**GROUP EG000013 - Domestic switching devices**

**CLASS EC001513 - Plug adapter**

Colour	Black	Model	Single	Nominal voltage	200-250 V
With plug for AU/NZ/PG/AR (AS/NZS 3112) (type I)	No	With plug for BE/DE/NL/RU (protective contact CEE 7/4, type F)	No	With plug for BE/DE/NL/RU/CH (Euro) (type C)	No
With plug for CH (SEV 1011 type 11) (type J)	No	With plug for CH (SEV 1011 type 12) (type J)	No	With plug for CH (SEV 1011 type 23) (type J)	No
With plug for FR (earth pin) (type E)	No	With plug for UK/HK (BS 1363) (type G)	No	With plug for IT (S/P 11)	Yes
With plug for IT (S/P 17) (type L)	No	With plug for US/CA/CN (NEMA 1-15) (type A)	No	With plug for US/CA/CN (NEMA 5-15) (type B)	No
Type of bus	IT (P 30)	Number of USB ports	0	Nominal current	10-10 A

## Barcode



8054320289494

**Pack**

20 NR

0.8 [kg]



8057711595648

**Cardboard**

200 NR

0.24x0.455x0.24 [m]

8 [kg]