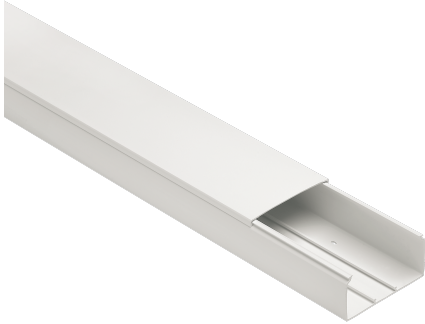


**ECCP10060B**

**CABLE TRUNKING WITH COVER DIM. 100X60 WHITE**

Trunkings > Wall and ceiling > Solid cable trunkings > Series cp - trunking lengths > Cable trunkings > White



**Technical Symbols/Marks/Approvals**



**Norms**

EN 50085-1 EN 50085-2-1

**Description**

Cable duct made of self-extinguishing rigid PVC technopolymer. The bottom is pre-drilled for fixing with screws and anchors. A front-hinged lid is included.

**Etim**

**GROUP EG000006 - Installation ducts for wall and ceiling**

**CLASS EC001938 - Wall duct**

<b>Degree of protection (IP)</b>	IP40	<b>Material</b>	Plastic	<b>Material quality</b>	Polyvinyl chloride (PVC)
<b>Halogen free</b>	No	<b>Anti-bacterial treatment</b>	No	<b>Surface protection</b>	Untreated
<b>Colour</b>	White	<b>Impact strength</b>	IK07	<b>Width</b>	100 mm
<b>Depth</b>	60 mm	<b>Length</b>	2 m	<b>Usable cross section</b>	5236 mm <sup>2</sup>
<b>RAL-number</b>	9001	<b>Mounting method cover</b>	Spanned	<b>With protective foil</b>	No
<b>Working temperature</b>	-5-60 °C	<b>Number of plug-in partitions</b>	2	<b>With cable fixing clip</b>	No
<b>With duct connector</b>	No	<b>Bottom perforation</b>	No	<b>Number of covers</b>	1
<b>Cover width 1</b>	100 mm	<b>Symmetric</b>	Yes	<b>Covers included</b>	Yes
<b>Construction type rectangular</b>	Yes	<b>Construction rear wall (inner side)</b>	Perforated		

**Documentation available for download**

**Instruction booklet**  
Istruzioni canali.pdf

**Certification**  
Canali e Minic Serie MC-CP.pdf

**Certification**  
LICENCE 669941\_CP-MC.pdf

## Barcode



8050880887170

**Cardboard**

20 MT

0.26x0.18x2.027 [m]

19 [kg]



8055035961521

**Pallet**

360 MT

1.2x0.8x2.2 [m]

342 [kg]